



Residential Solid Waste and Recycling Collection Service

New Program, New Rules, New Convenience –

For all Town Residents Currently Receiving Weekly Curb-Side Garbage Pickup



In July, Golden will join the majority of North American communities in implementing fully-automated and standardized curb-side garbage and recycling collection services. The new system places fair controls on the amounts and type of waste residents produce and standardizes all resident containers. It meets Council's goal in striving for environmental responsibility, addresses bear and other animal problems, and provides more convenience and cost effectiveness for residents.

For garbage collection we are standardizing bins and implementing rules for amounts and type of waste for collection. For recycling, everything you may have been taking to the big green containers by the bottle depot except glass can now be collected from you curb-side.

THE NEW BINS

The green (garbage) and blue (recyclables) bins (64 gallon, flip lid, on wheels) are our new standard for you and once the program has started we will not collect any garbage and recycling from you unless it is in these bins.

Before July 10th, those of you NOT having the green coloured bin will have one delivered to you. The BLUE bin is our standard for recyclables. Before July 10th, all of you will have one delivered to your driveway. Every resident will then have ONE green bin for garbage and ONE blue bin for recyclables.



The bins will be owned by the municipality. They are tagged and belong to a property address and must stay there. You cannot take them with you if you move. If you already have a green one, we'll be buying it back from you at a depreciated price by crediting your utility bill when you pay it next January at Town Hall. Reasonable care of the bins is your responsibility. We will replace bins damaged through normal wear and tear; replacement as a result of resident abuse will come with a fee.

SCHEDULING

Garbage (green bin) pickup remains the same as always. Your regularly scheduled weekly pickup is unchanged. Recycles (blue bin) will be emptied EVERY TWO WEEKS ON TUESDAYS.

If your garbage gets collected on Wednesdays, your first recycling pickup will be Tuesday, July 12th. If your garbage gets collected on Thursdays, your first recycling pickup will be Tuesday July 19th.

Blue bin collection will then occur every two weeks on Tuesday.

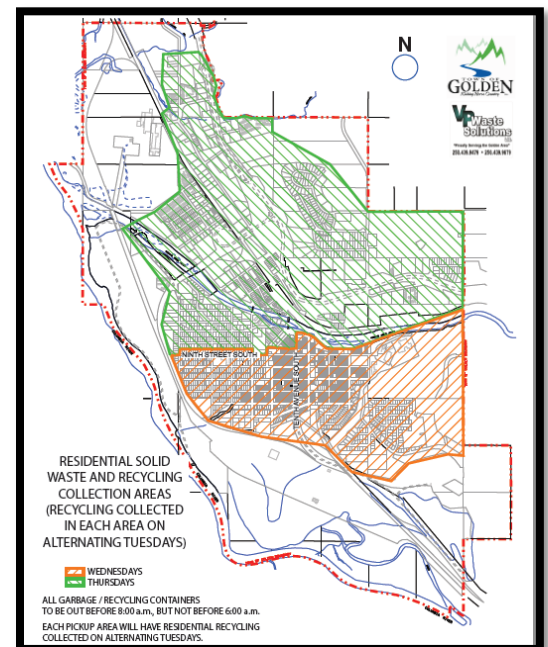
THE RULES

Garbage or recycling placed in anything other than the new bins will not be collected. Either bin will not be emptied if:

- It is not placed correctly at the curb, or is placed in a snow bank
- The lid is not fully closed
- It is damaged to the point where it cannot be used
- Your Blue (recycles) bin has garbage or glass in it
- Your Green (garbage) bin has recyclables in it
- You put Prohibited Waste in it (see other side for definition)

THE COST

Beginning in 2012, your annual utility bill will increase by \$52, (equal to \$4.33 per month) which includes the cost of providing the service, your bins, and an annual contribution to a reserve fund for eventual bin replacements. The cost for baling and shipping the material to sorting centres will be recovered through both Golden and Area 'A' taxation by the CSRD.



WHAT GOES IN THE GARBAGE BIN

“Domestic Waste” meaning domestic garbage, wrappers, non recyclable packaging, kitchen waste, food products, pet food, bird feed, compost, noxious weeds, diapers, grease, game meat, fruit; combustibles such as leather, wood scraps, and non-recyclable paper; non-combustibles, such as crockery, unmarketable glass, dirt, ashes from fireplaces and solid fuel burning appliances; un-usable construction and demolition refuse, non-metal pipe and unrecyclable plastics; non locally recyclable empty household product containers, and accumulations of animal, fruit or vegetable matter that attends the use and preparation of meat, fish, fowl, fruits or vegetables.



WHAT DOES NOT GO IN THE GARBAGE BIN

“Prohibited Waste” meaning materials from excavations, material from lot clearing or building construction, repairs, alterations, or maintenance, debris from any building or part thereof removed or damaged or destroyed by fire or any other cause, material from any manufacturing processes, condemned or contaminated matter from any premises. It also includes but is not limited to:

Hazardous, ignitable, biomedical, radioactive, reactive, and yard waste; liquids and sludge, PCB's and pesticide products, discarded furniture or other household equipment, paint, discarded or abandoned vehicles or farm equipment or parts thereof, scrap metal, tires, used oil filters, waste oil or petroleum products, lead acid batteries, propane tanks, hot or unwrapped ashes, animal carcasses, stones, sand, and rocks, concrete and asphalt, waste that is on fire or smouldering, unwrapped sharps, electronics and electrical products, including batteries, and animal excrement not contained in a separately sealed container.

WHAT GOES IN THE RECYCLES BIN

RINSED aluminum and tin cans, corrugated cardboard, paper fibres, rigid plastic and stretchy plastic film from grades #1 to #7



WHAT DOES NOT GO IN THE RECYCLES BIN

Domestic and Prohibited waste and glass.



Why the strict rules on garbage?

As a Bear Aware community, other recurring animal problems such as birds and dogs, and a responsibility to cut down on our garbage outputs, setting size limits on bins and mandating closed lids will help service delivery, and result in fewer messes on the street.



What if I don't follow the rules?

First, we'll tell you about it. Then, we simply won't empty your bins. Doing so then becomes your cost to take to the landfill. Repeat offenses will likely end up in an indefinite suspension of service. Service participation is mandatory so you will continue to pay for it as well - it's in everybody's best interest to comply with the rules.

Why can't glass be included?

Glass is problematic in many curb-side programs as it contaminates and creates significant hazards at sorting centres when included in baled recycled materials. This is an inconvenience, but glass can still be deposited in containers provided by the CSRD adjacent to the bottle depot. Hopefully this can change in the future.

Can I have more bins?

Yes, though it will cost you. An additional green bin is \$125/year and an additional blue bin is \$52/year.

How do I properly place my containers?

Most people have the idea already. The handle and wheels must face the house. If you have a curb, place it on the street butted up against it. If you don't have a curb, place it right next to the street. It has to be easy to reach with the truck's automated arm – not behind a vehicle, halfway up a driveway, or in a snow bank.

What if my bin is damaged?

Tell us and we'll determine if it needs replacement. If it was caused by the collector or by normal wear and tear, there's no charge to you.

Questions? Contact us.

Program rules and conditions:

Bin roll outs, collection service details:

Town of Golden

VP Waste Solutions Ltd.

250.344.2271 or inquiries@golden.ca

250.439.9479 or 9679